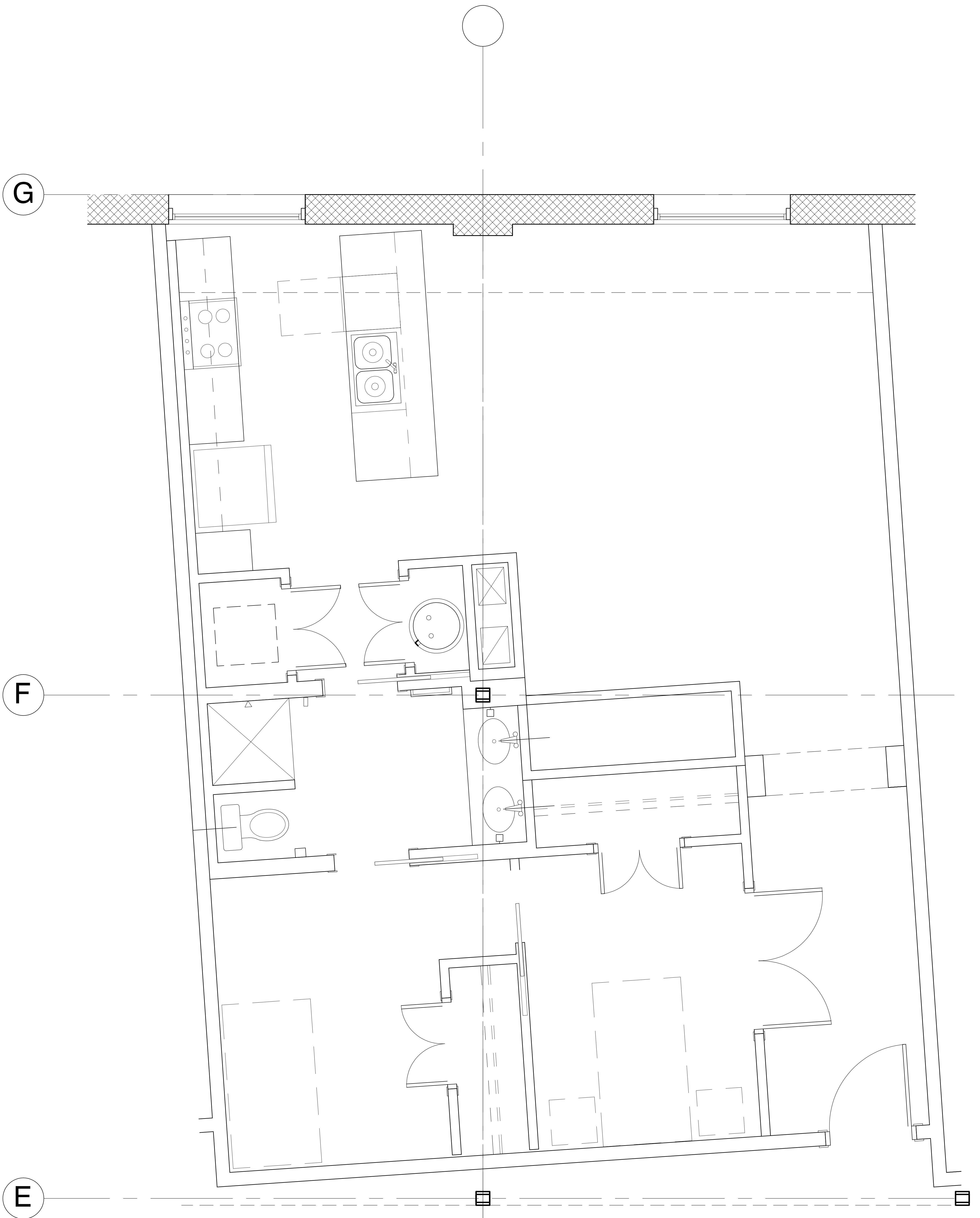


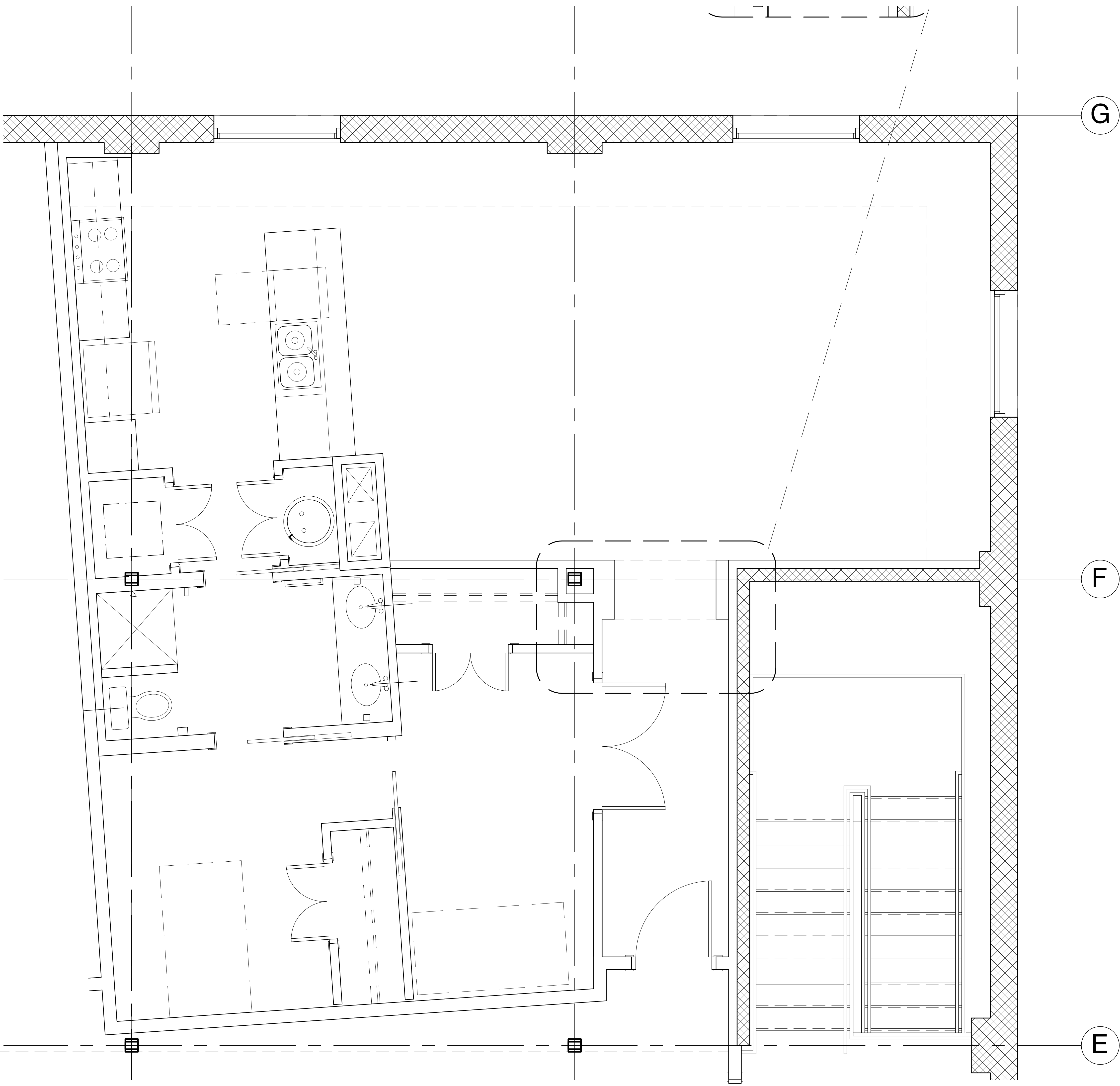
**1** TYPE 'A' UNIT  
 Scale: 1/4" = 1'-0"



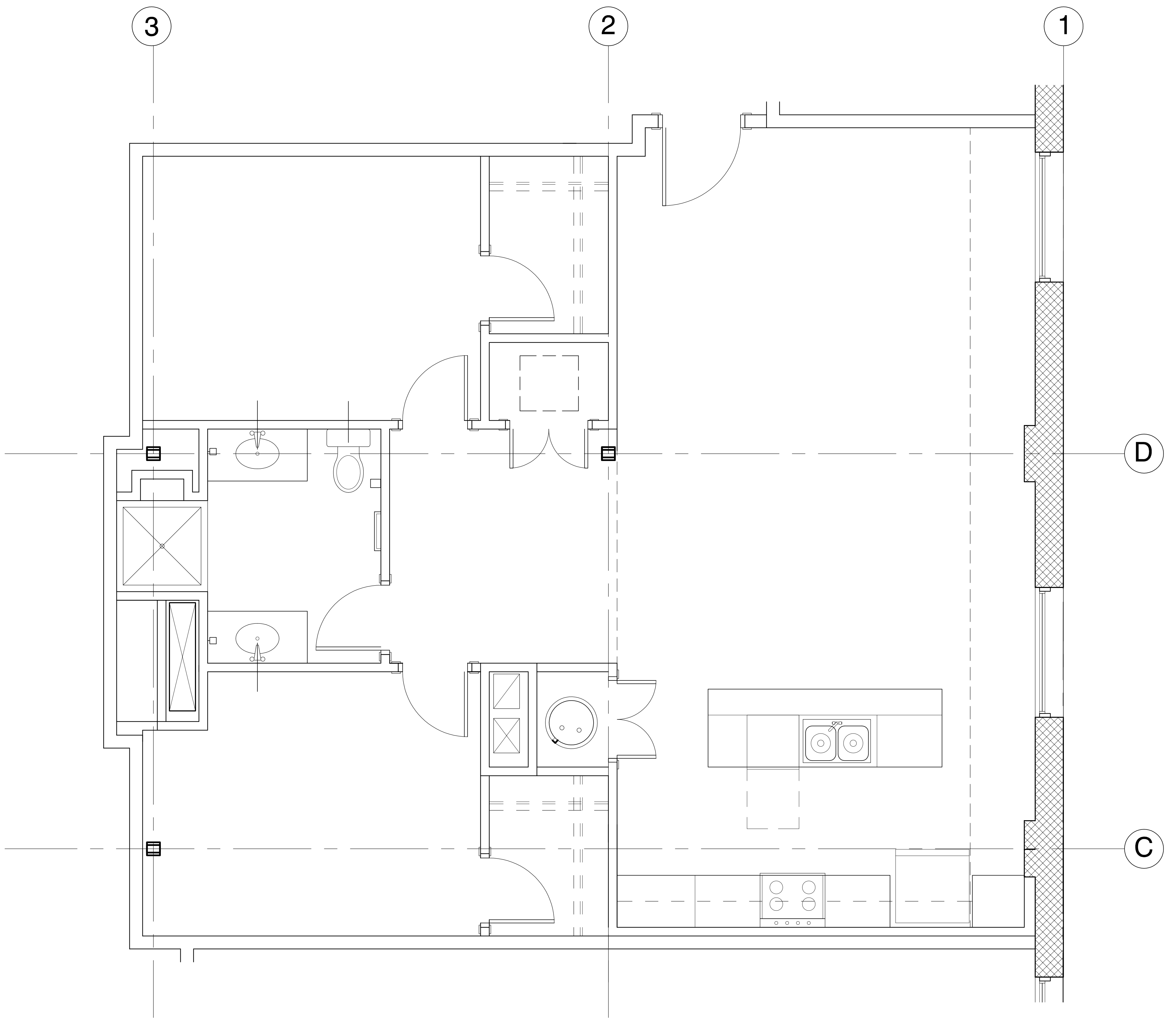
2

**TYPE 'B' UNIT**

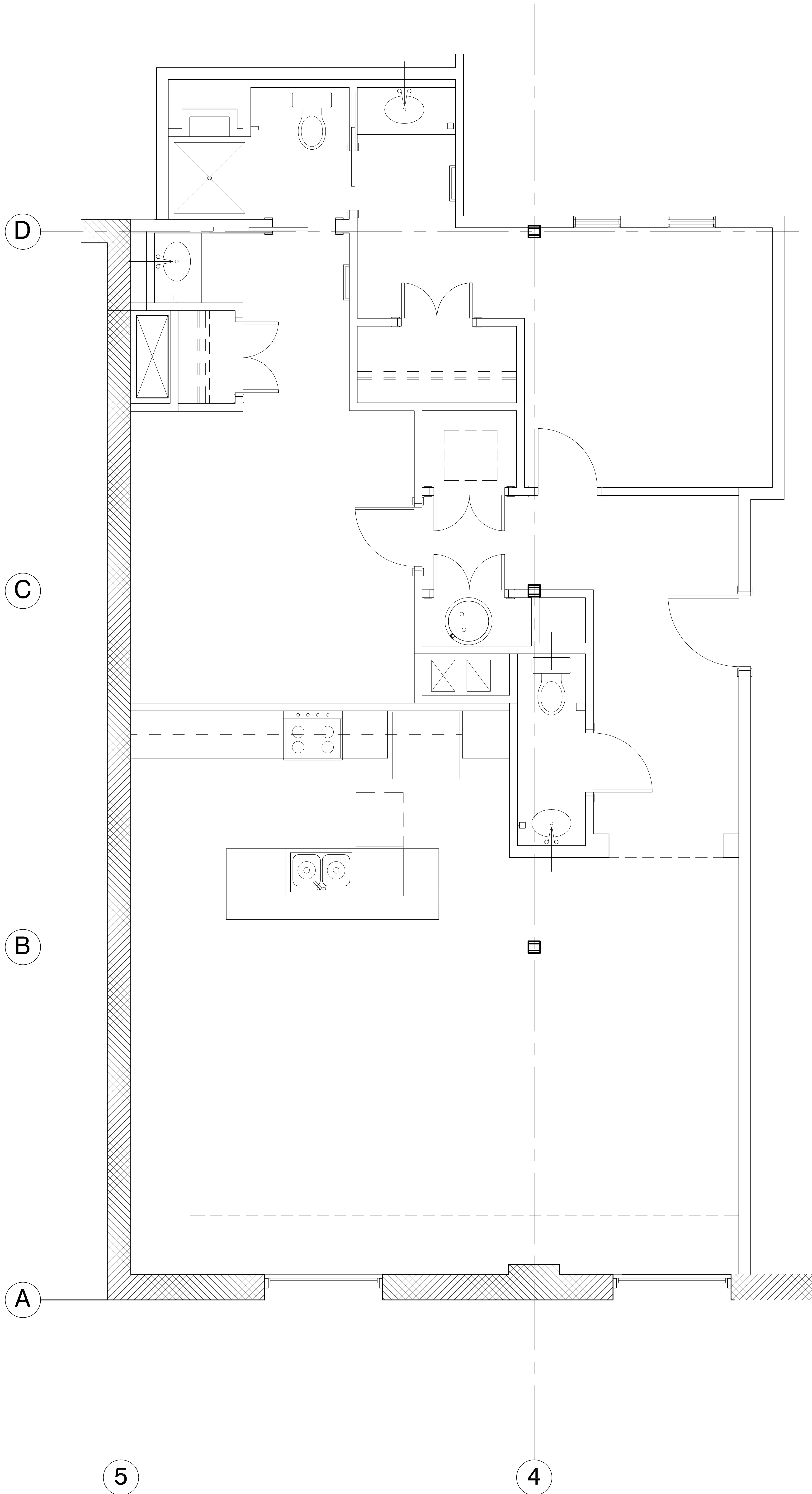
Scale: 1/4" = 1'-0"



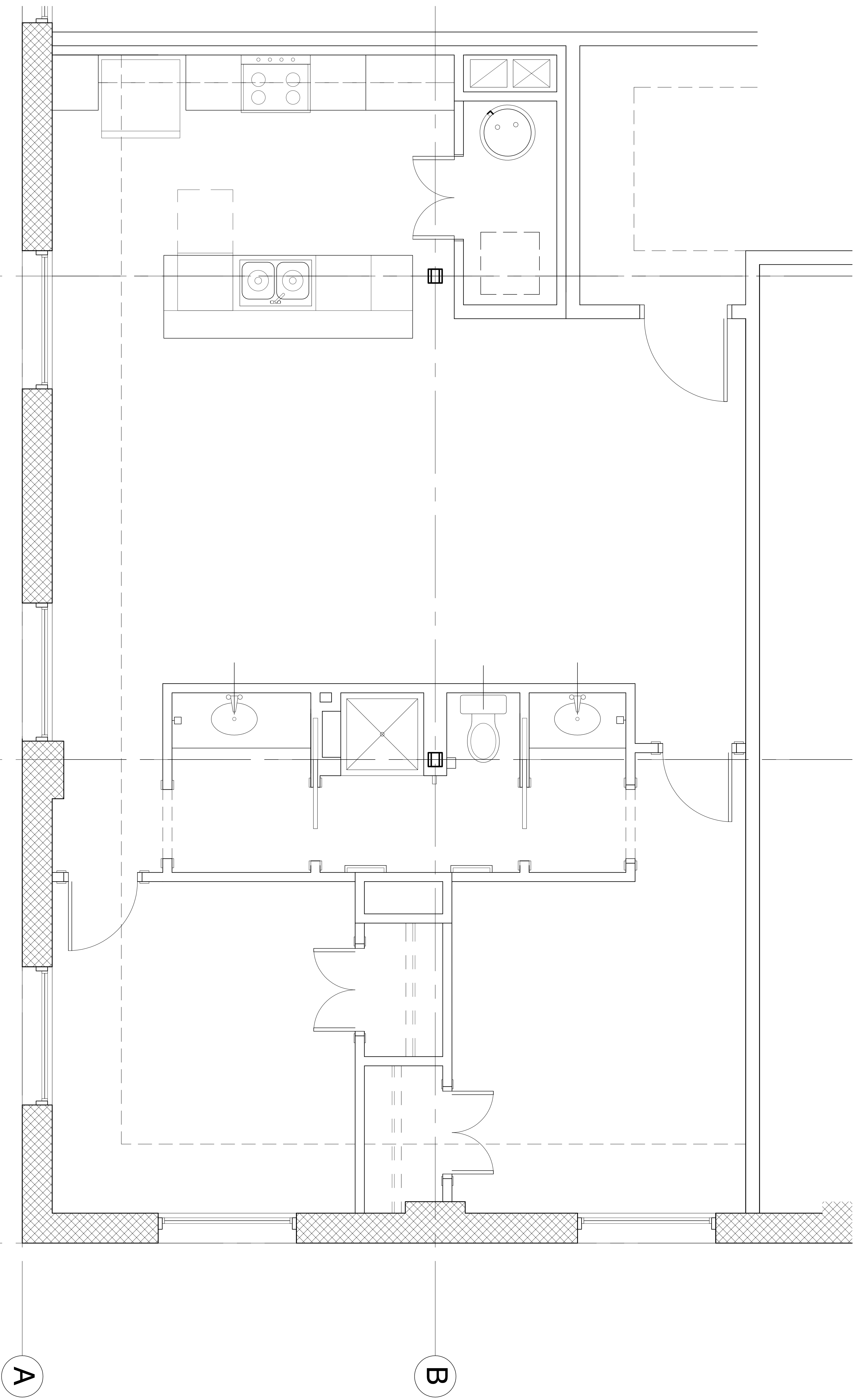
**3** TYPE 'C' UNIT  
Scale: 1/4" = 1'-0"



**1** TYPE 'D' UNIT  
Scale: 1/4" = 1'-0"



**2** TYPE 'E' UNIT  
Scale: 1/4" = 1'-0"



**3**  
**TYPE 'F' UNIT**  
Scale: 1/4" = 1'-0"